

LINUX PC-Based

Camera Surveillance System



Unlimited Vision

Infinite Value

**View On:
PDA**

3G Mobile

Remote View Program

Drag & Drop

Panorama Search

Smart Object Search

Dual Monitor

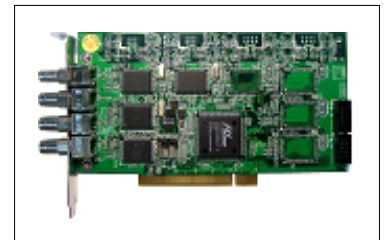
Linux PC-based DVRs

We all work hard to build and maintain solid relationships with our clients and now with our newest Linux based DVR cards, you'll find it easier to satisfy even the most demanding clients.

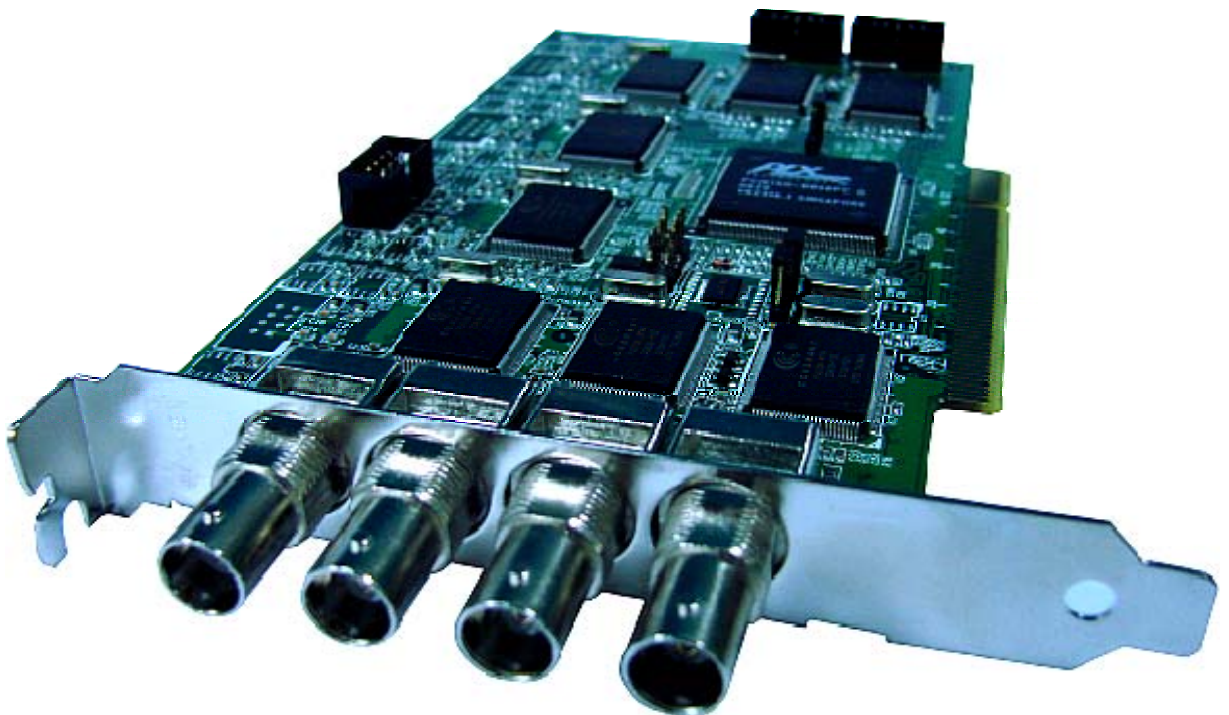
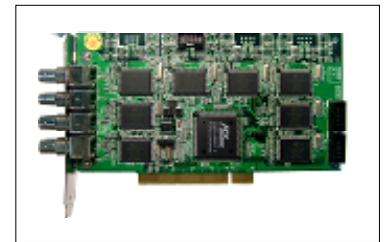
Our technology offers two great options of its new Linux DVR card. Created is a stable, reliable and feature packed 4 channel and 8 channel DVR card, so the choice of combinations mean a 4, 8, 12 or 16 channel system can be designed to suit your client's exact needs.

Even more good news, NO License fee for the O.S. is required, so the overall cost is again reduced. However these things don't mean much unless there are ongoing Technical Support and product upgrades. We offer both; in fact we think it's the best support you could ever ask for.

4CH DVR Card



8CH DVR Card



LINUX SURVEILLANCE SOLUTION



LINUX SURVEILLANCE ADVANTAGES

O.S. LICENSE FEE NOT REQUIRED

Users are able to save money the moment they purchase Linux DVR cards from us because Linux SUSE O.S. is provided.

As time goes on, it will be more and more difficult to purchase Windows XP O.S. in the market due to the arrival of new Windows Vista O.S., and because **none of the current PC-based DVR products in the market are able to support Windows Vista O.S. for the time being.**

Based on that fact, Linux PC-based DVRs is most likely to replace Windows PC-based DVRs, for the additional reason of **Linux O.S. is far more stable then Windows O.S. and in the security world, stability is a huge and most important factor.** This is an excellent time to gain market share with Linux PC-based DVRs.

DOM NOT REQUIRED

What is DOM? DOM is **DISK ON MODULE**. It is a device to store the DVR application software and required computer hardware configuration on the DVR card. **DVR cards with DOM cost more and when users need to upgrade, replace or modify computer hardware, additional fees will be required** due to the fact that DOM is extremely restricted with the computer hardware configuration; any new changes will require users to purchase a new DOM.

Why do manufacturers use DOM? It is because of the piracy issue. Many manufacturers do not have their own factory, so their DVR cards are produced in China and by using key-code to protect their software. **We have total control of our own products because we have our own factory locating outside of China, so we do not require DOM for protection.**

SUPPORT REMOTE VIEW BY USING WINDOWS VISTA

Our PC-based DVRs is able to support remote view function on computers running Windows Vista NOW, not later.

LESS CHANCE OF VIRUS ATTACKS

Our Linux PC-based DVRs require less maintenance. Linux PC-based products have much less chance of getting attacked by a virus, due to the nature of Linux O.S., which makes Linux PC-based DVRs a better security system.

RoHs COMPLIANT

SPECIAL PRODUCT FEATURES

DRAG & DROP

Frustrated with switching cables behind the PC whenever you want images on screen to be rearranged? No more problems, swapping camera images on screen is now so easy. Simply click on the camera and drag it to its desired location.



PANORAMA SEARCH

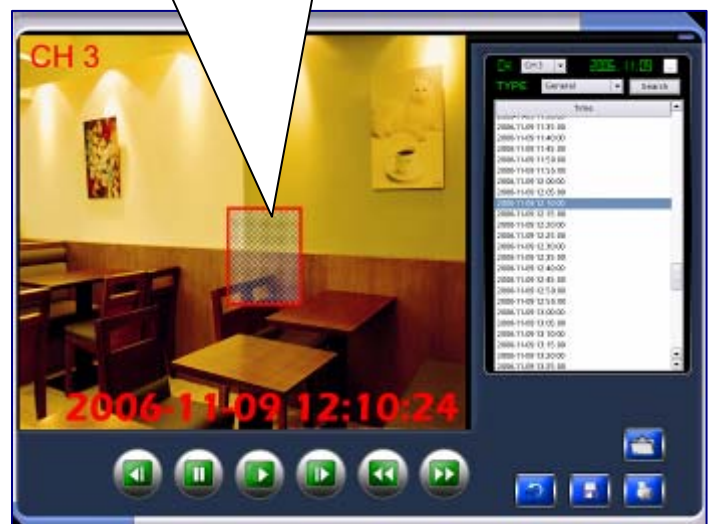
No more guessing, locate any event in just minutes with unique **PANORAMA** function. 288 thumbnails available per day enable user to compare and recognize the difference of each image. When combining this with **SMART OBJECT SEARCH** function, this creates the most practical and efficient way to search for events.

288 Thumbnails for event



PANORAMA SEARCH

Adjustable motion sensitive mask



SMART OBJECT SEARCH

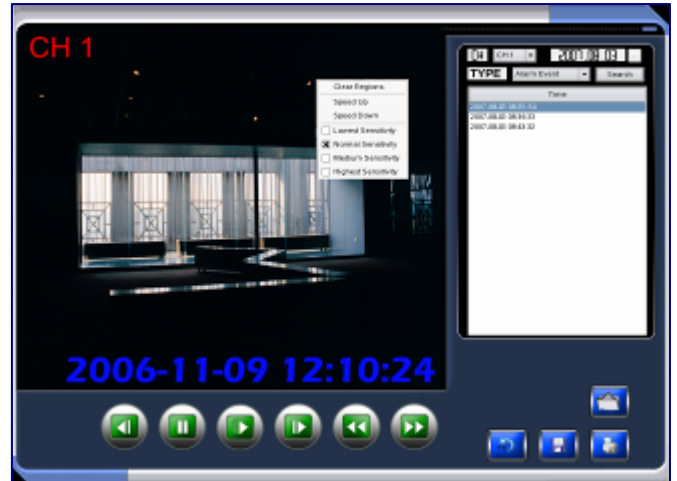
DUAL MONITOR

Our **DUAL MONITOR** function is more than just watching live images on two screens at the same time. Both monitors can be configured to display independent images for security purposes. While monitor one is event searching in the office, the second monitor is out at the POS displaying live image, customers therefore can only view those live images, proving that there are cameras installed. Stop theft before it happens.

MONITOR 1 - displaying live



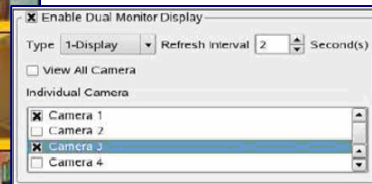
MONITOR 1 - event search



OR



MONITOR 2



SYNCHRONIZE PLAYBACK

Convenient and powerful playback function, our Linux PC-based DVRs is able to **SIMULTANEOUSLY PLAYBACK ALL CAMERAS IN SINGLE STEP**. 1X/2X/4X/8X forward/backward playback speed with 1, 4, 9, 16 or 17 split screen.

Playback all videos at the same hour, minute and



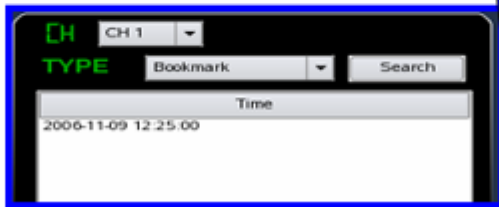
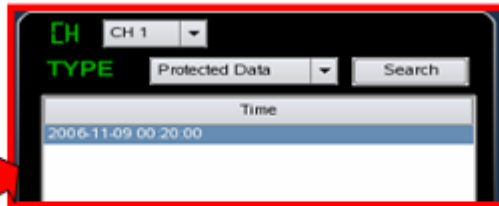
FILE PROTECT

Preserve important recorded video files **FILE PROTECT** function (w/password lock) to avoid data lost due to FIFO (First-In, First-Out) process.

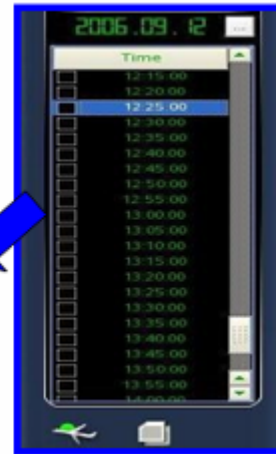
TAG BOOKMARK

Bookmark important recorded video files for convenient viewing purpose. System is able to perform fast search of all bookmark video files. **TAG BOOKMARK** is a convenient function for user to review files at later time.

FILE PROTECT



TAG BOOKMARK



REMOTE VIEW

We provide multiple convenient applications to monitor main site (host PC - TX) from anywhere in the world via internet by using **PDA, 3G SMART PHONE, INTERNET EXPLORER** and **RX REMOTE PROGRAM**.



INTERNET EXPLORER

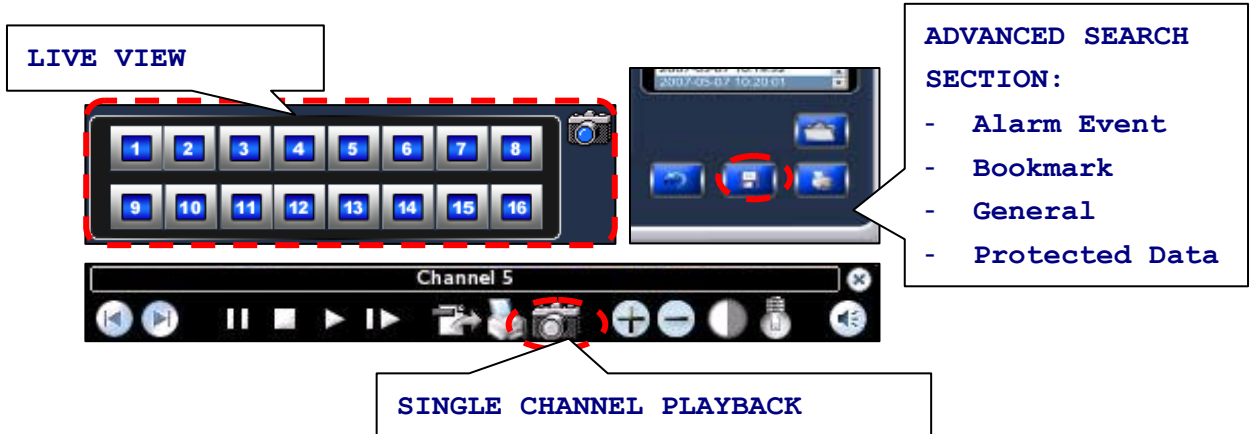


RX REMOTE PROGRAM



SNAPSHOT

Easily and instantly capture images during various stages of viewing and playback. Watermark function available for verifying the authenticity of captured images.



EASY UPGRADE

When adding additional Linux DVR cards, DVR application software re-installation is not required. System is able to auto detect changes and recognize new operating environment automatically.



WIN-WIN SOLUTION

No companies want to see their existing customers go else where. With our newest Linux-based DVR cards, companies will be able to keep existing customers on their side and create repeat customers at the same time.

It is difficult for other companies to take over the after sale service without the knowledge of how to maintain Linux PC-based DVRs, which will only be provided by us to our certified dealers.

Linux PC-Based Capture Card

Product Specifications

Camera Input	1-16 channels with color/mono NTSC/PAL BNC input
Display FPS	4CH: NTSC/PAL: Real-View 8CH: NTSC/PAL: Real-View
Total Recording FPS	4CH: NTSC 120/PAL 100 8CH: NTSC 240/PAL 200
Compression	MPEG4
Recording Resolution	320*256 / 640*256 / 640*480 (NTSC & PAL)
Split Screen	1, 4, 9, 16, 17 split screen and Full screen.
Camera Reposition	1. Drag and drop by using mouse to switch selected split screen image positions. 2. Select any camera to be displayed in multiple locations (channel) by using mouse.
Dual Monitor Output	Software supports independent video display for the secondary monitor. Adjustable split screen and sequence play. Able to display/hide any cameras selected.
Recording Mode	Adjust/Setup all cameras' recording mode and recording frame rate independently.
Instant System Log	Time stamped event database for system configuration, alarm, video loss and entering/exiting DVR program.
Power Control	1. Adjustable auto-reboot timer setting. 2. Shutdown the PC when exiting DVR program.
Adjustable Network Port Setting	Support multiple host PC sharing single static/dynamic IP.
Pop-up	When more than 2 cameras triggered at the same time, split screen display will be arranged automatically to display triggered images.
Backup	1. Built-in backup program with no extra burning software required. 2. Support CD/DVD backup 3. Support Windows Media Player, no extra program required for playback backed up video files.
Snapshot	Capture random image from any camera in Monitoring/Playback.
Alarm In/Out	8 In /Out (I/O module optional)
Alarm Notification	Pre-configured/Self-recorded alarm sound (.wav) for video loss and motion triggered event.
Audio	System support live audio and audio recording.
Playback	1. Simultaneous playback of all cameras in single step. 1X/2X/4X/8X forward/backward playback speed with 1, 4, 9, 16 or 17 split screen. 2. Select any camera to be displayed in any single/multiple locations (channel).
Zoom In/Out	Each camera image can zoom in/out and drag up and down, left and right.
Smart Search	Mask area within the video frame for fast objects/people search; playback will pause when objects/people making contact with masked area.
Panorama Search	Display 288 thumbnails of recorded video files per day, for super fast event locate.
Bookmark	Bookmark important recorded video files for convenient viewing purpose. System is able to perform fast search of all bookmark video files.
File Protection	Preserve important recorded video files (w/password lock) to avoid data lost due to FIFO (First-In, First-Out) process (during HDD/HDDs is/are circulating and deleting the recorded video files).
Watermark	Application for verifying if stored image has been altered.
User Authorization Setting	Assign different ID, password and authorization of various viewing/control to multiple users.
Remote View	Support remote location monitoring by using Windows Media Player, I.E. browser, PDA and 3G mobile. Support static/dynamic IP, Redirect service such as DDNS.

RX Remote Program (optional) - Support Windows XP OS

Remote view TX backup recorded video files	Reposition cameras	Support Dual Monitor
Support Domain Name	Sequential (Rotate with different IP)	Support multi-IP connection
Each channel can switch to different IP or camera	Snapshot	Pop-up
Live and playback TX backup recorded video files presented in the same screen simultaneously		

*Information subject to change without notice.

WHY WORK WITH US?

CE certified

FCC certified

RoHS compliant

Software patented

Complete & full technical support provided

Opinions and suggestions of marketing strategy provided

Highest quality materials used with all series of DVR card

Designed and Manufactured with perfect quality